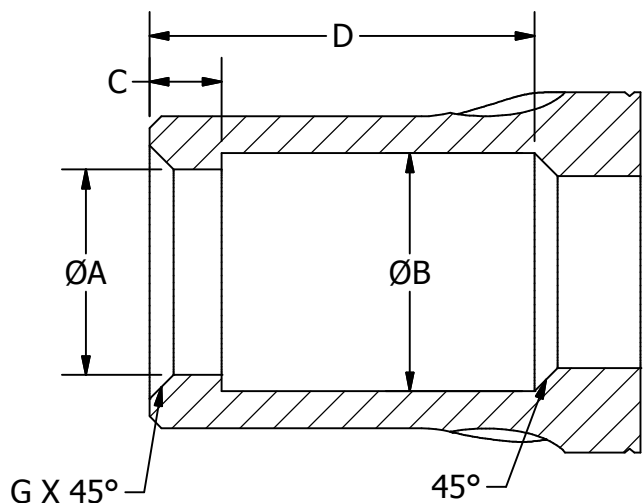


2

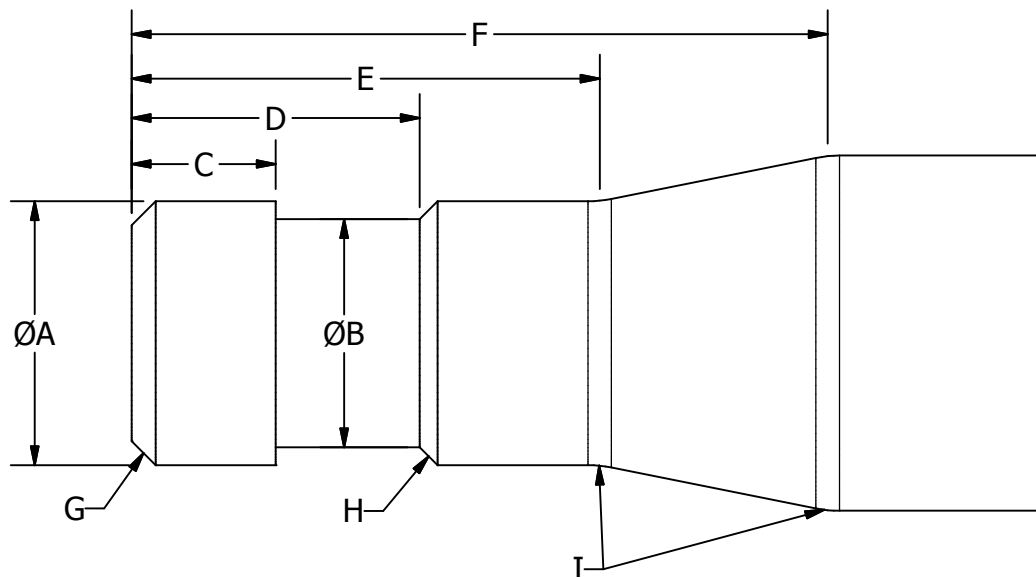
1

FISHNECK DIMENSIONS

SIZE	ØA	ØB	C	D	E	F	G	H	I	PULLING TOOL
1 1/2 & 2 1/16	1.188	1.000	0.500	1.000	2.625	3.250	0.125	0.094		1 1/2" JDC
2 3/8	1.375	1.188	0.750	1.500	2.438	3.375	0.125	0.094	R0.625	2" JDC
2 3/8 BH	1.375	1.188	0.750	1.500	2.750	3.750	0.125	0.094	R0.625	2" JDC
2 7/8	1.375	1.188	0.750	1.500	2.438	3.500	0.125	0.094	R0.625	2" JDC
2 7/8 BH	1.375	1.188	0.750	1.500	2.750	3.875	0.125	0.094	R0.625	2" JDC
3 1/2	1.750	1.500	0.750	1.375	2.313	3.625	0.125	0.125	R0.625	2 1/2" JDC
2 3/8 ID	1.063	1.240	0.375	2.125			0.125			1 1/2"
2 7/8 ID	1.375	1.560	0.500	2.500			0.125			2"



ID FISHNECK



OD FISHNECK

NOTE:

- PULLING TOOLS MOST COMMONLY FOUND ON WIRE LINE SERVICE TRUCKS.
REFERENCE: BAKER OIL TOOLS (2001). BAKER TECH FACTS REV SEPTEMBER, 2002; PG 12-13, 12-14 (PG 551-552 ON ELECTRONIC VERSION)
- FISHING NECK SIZE TYPICALLY REFERRED TO BY "A" DIMENSION.

DRAWN PaulR	3/13/2006	PRODUCTION CONTROL SERVICES, INC.	
CHECKED Paul Roberts	3/13/2006	3771 EUREKA WAY FREDERICK, COLORADO 80516 (720) 407-3550 - FAX: (720) 407-3540	
THIS DRAWING IS PROPRIETARY INFORMATION ANY DUPLICATION OR REPRODUCTION MUST BE ACCOMPANIED BY WRITTEN APPROVAL OF PCS		TITLE 2-3/8" PAD LOCKING FISHNECK NUT	
		SIZE A	DWG NO STD FISHNECK DIMS
DO NOT SCALE DRAWINGS		SCALE NONE	SHEET 1 OF 1



2

1